



WILMINGTON PUBLIC SCHOOLS

**Social Emotional and Behavioral Supports:
Reentry to School**

Alice Brown-LeGrand

Director of Student Support Services

Christine Murray

Coordinator of Behavioral Health and Social
Emotional Support

3.24.21

Introduction



WILMINGTON PUBLIC SCHOOLS

- **Overview: The last 5 years**
- **Reopening Fall 2020/2021**
- **What is happening during 2020/2021 school year**
- **SEL Impact and challenges**
- **Looking forward: Reentry to School**



WILMINGTON PUBLIC SCHOOLS

Overview: The Last 5 years

(2016-17)

- Development of Office of Student Support Services
- Expanded responsibilities from just Special Education to include Nursing, Behavioral Health, School Counseling, Civil Rights, Preschool, Special Education, bullying harassment, Section 504, Title 9,
- Added Coordinator of Behavioral Health and Social Emotional Support Position
- Positive Behavioral Interventions and Supports (PBIS)- began implementation
- District began collaboration with McLean's Anxiety Mastery program

(2017-2018)

- Expanded PBIS to remaining schools in 2017-18
- Increased clinical staff: Middle School .5 to 1.0 social worker
- Massachusetts School Mental Health Consortium (MSMHC) member district
- Expanded McLeans collaboration with district
- Began Signs of Suicide (SOS) screenings at Middle School

Overview: The Last 5 years (cont.)



WILMINGTON PUBLIC SCHOOLS

(2018-2019)

- Strategic plan-“Foster the well being of each child to achieve social, emotional and academic success.”
- Walker program review

(2019-2020)

- District leadership participated in DESE MTSS Institute and Inclusive Practices Institutes
- School closure March
- Wilmington Community Cares Event Resource Panel
- Parent series webinars provided in Spring 2020

Office of Student Support Services:

Social Emotional Program Additions Since August 2016



WILMINGTON PUBLIC SCHOOLS

<u>August 2016</u>	<u>February 2017</u>	<u>Spring 2017</u>	<u>August 2017</u>	<u>August 2018</u>	<u>August 2019</u>
Middle School: Student Support (redesigned in August 2017)	Boutwell: Stepping Stones	Woburn Street: STAGES	Shawsheen: Stepping Stones	North Intermediate: STAGES	High School: Transitional Support Services (BRYT Program)
				West Intermediate: Stepping Stones	
				High School: Evolutions (added additional classroom)	

Reopening Fall 2020/2021



WILMINGTON PUBLIC SCHOOLS

(2020-2021)

- Increased clinical staff-Social Worker at WMS
- Added additional district wide BCBA
- SEL reopening group formed to facilitate school reopening

[SEL Supports for Students](#)

[SEL Supports for Staff](#)

[SEL Supports for Families](#)

- Family Resource Guide



What's happened during 2020-2021 school year?



WILMINGTON PUBLIC SCHOOLS

Staff:

- Needs survey (August), (January)
- Offered professional development that provides staff resources to strengthen their ability to meet the social emotional needs of students: first 10 days of school and through Wilmington University (WU)
- Clinical staff-strengthening systems of support, universal screening, Care Coordination & Complex Cases Under Covid-19- Partnership with BRYT Team
- Mcleans Anxiety Mastery Program Consult meetings (Elementary and MS)
- SEEM consults to support newer Social Emotional Programs
- 10 staff members participating in DESE "Hope and Healing Through Active Anti-Racism"

Students:

- Participating in SEL/PBIS curriculum
- Relationship Mapping-check-ins with students
- School based teams-assessing student, family needs
- MS/HS students participating in YRBS-COVID specific questions added to the survey this month



Family engagement:

- Needs survey
- Caregiver Virtual Series Nights (Jan/Feb)
- Upcoming Lunch and Learn (April)
- Newsletters-MH resources and family support groups

*Community outreach through MassSupport-Riverside Trauma



WILMINGTON PUBLIC SCHOOLS

SEL Impact and Challenges

“Schools are reporting increased rates of chronic stress, anxiety, and depression due to the pandemic, social isolation, a weakened economy and the racial trauma that many students have experienced.”

DESE Guidance Promoting Student Engagement, Learning, Wellbeing and Safety During Remote and Hybrid Learning, Winter 2021

The WPS clinical team have reported:

- Some students were doing well at the beginning of the year, and now are struggling more mid year.
- Changes in remote/hybrid models have impacted students well being and engagement
- Deeper depression for students
- Addressing school refusal and absenteeism
- Increase in recognizing abuse and neglect and fulfilling mandated reporting responsibilities to ensure safe home environment
- Growing concerns for students that require psychiatric screening, mobile crisis and hospitalizations, primarily at the MS and HS levels.
- Providing more access and referrals to community agencies (mental health, food/nutrition, housing, etc.)

Looking forward: Reentry to School



WILMINGTON PUBLIC SCHOOLS

Proposal to increase intervention and prevention efforts:

1. Increase access to provide outpatient mental health and wellness resources and referrals to benefit families
2. Increase support around Multi Tiered Systems (MTSS) for SEL Programming
3. Increase clinical staff

Proposal #1-Increase access to provide outpatient mental health and wellness resources and referrals to benefit families



WILMINGTON PUBLIC SCHOOLS

· INTERFACE Referral Service is an outpatient mental health resource and referral Helpline open Monday through Friday, 9am-5pm, available to residents and/or public school students of subscribing communities in Massachusetts.

William James INTERFACE Video

The INTERFACE Referral Service has expanded to serve 60 individual communities within the Commonwealth of Massachusetts, making the Helpline available to 1.2 million people in the state of Massachusetts. Some of the participating surrounding districts include:

Arlington

Burlington

Bedford

Chelmsford

Melrose

Reading

Lexington

Wakefield

Winchester

What is INTERFACE Referral Service? www.interface.williamjames.edu



Proposal #2-Increase Support around

Multi Tiered Systems for SEL Programming



WILMINGTON PUBLIC SCHOOLS

Moving from Awareness to Action: Panorama Education

Using one platform to have actionable data on social emotional learning and multi-tiered systems of support.

- Student SEL Surveys, administration 2-3 times a year, analysis and reporting
- Intervention Tracking and reporting
- Check-ins: pulse surveys to receive quick feedback from students on wellbeing, SEL, and school climate

Grades 3-12 -student self assessment

Gr. K-2 Teacher assessment to target SEL competencies

*Access to Panorama's Playbook and library of SEL intervention strategies

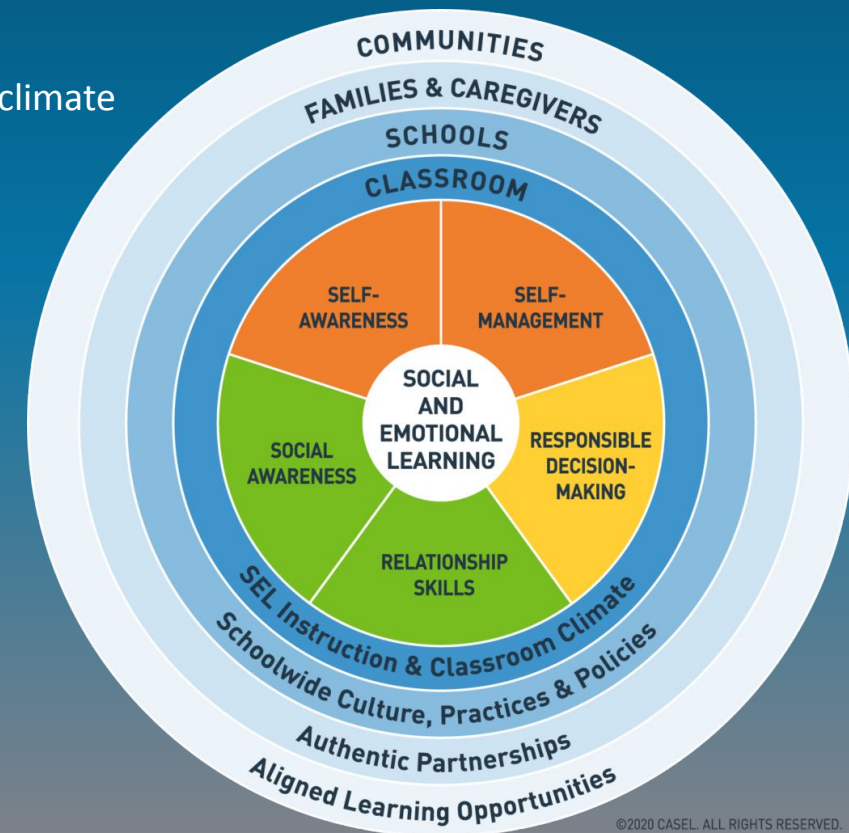
*Technical support

*PD

[Panorama video](#)



www.panoramaed.com



Proposal #3-Increase Clinical Staff



WILMINGTON PUBLIC SCHOOLS

Addition of two district wide clinical staff :

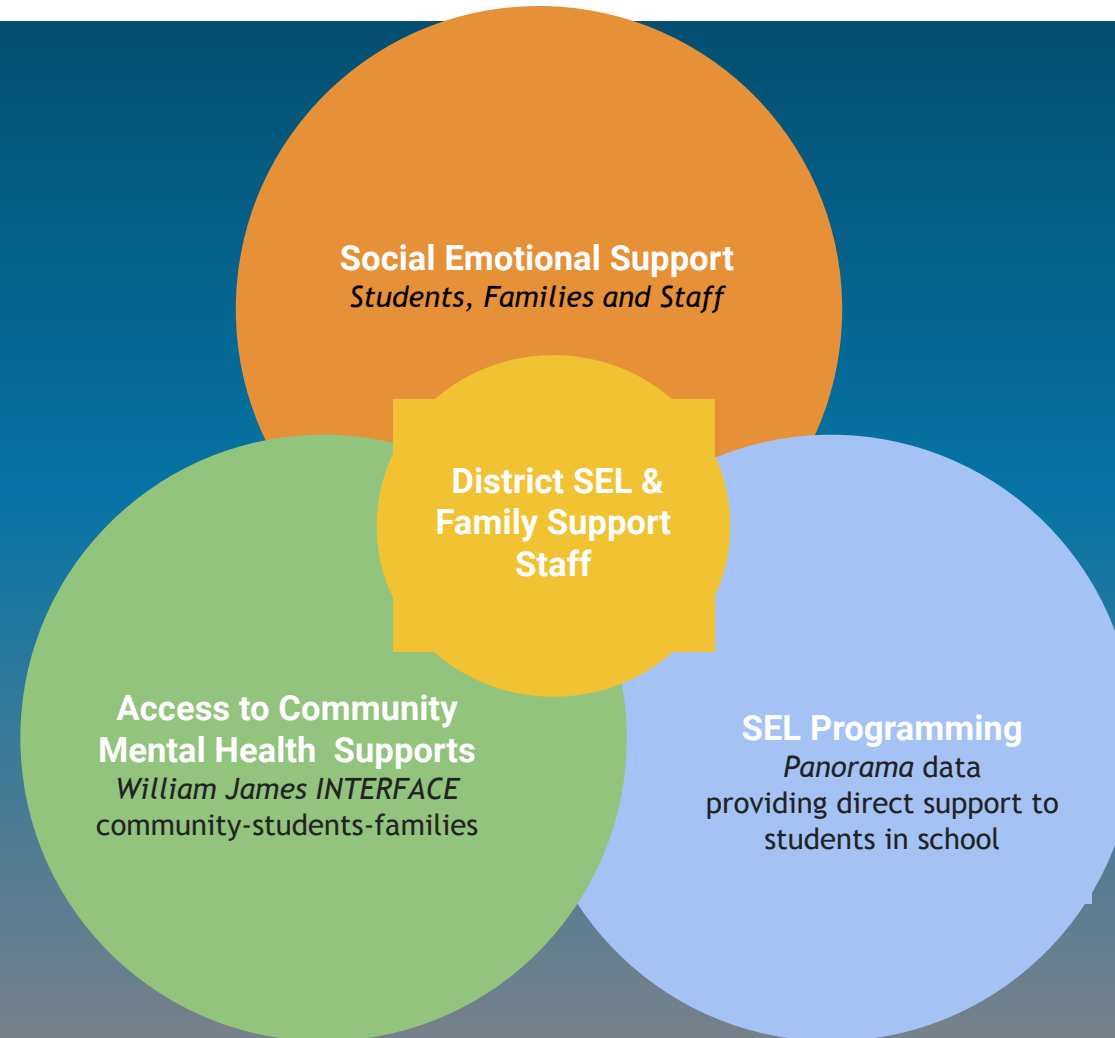
- Will work with and support the two separate sides of town to ensure vertical alignment of services
- Collaborate with staff and teams in the development and implementation of multi-tiered systems of social emotional targeted interventions at the building and district level (professional development)
- Provide ongoing support for families in need including group work, parent events, and referrals for crisis intervention
- Support students throughout the school day by providing provide evidence based therapeutic interventions through whole group, small group and individual short term counseling to promote healthy coping skills development and resilience strategies
- Provide support for families outside of the regular school day



Strategic Approach for Enhancing Social & Emotional Support for WPS



WILMINGTON PUBLIC SCHOOLS



Questions?



WILMINGTON PUBLIC SCHOOLS

